



DAN-matic
High quality components for
professional door manufacturing

DAN-matic introduction

DAN-doors offer a range of proven, high-quality sliding door systems for OEM production. One of the main reasons you can rely on DAN-doors products is that we use the very same components in our own highly-esteemed doors, which leave our factory every day.

We have two different systems with a large variety of options, so you can assemble your own custom DAN-matic set. The 1800 and the 2400 sets are available as manual or automatic kit sets.

DAN-matic 1800 Sliding Rail system

The DAN-matic 1800 Sliding Rail is designed for door weights of up to 250 kg (with two rollers) or up to 400 kg (with four rollers). This highly versatile system uses either aluminium or stainless steel rails and is available for single or double leaf doors.

DAN-matic 2400 Sliding Rail system

The DAN-matic 2400 Sliding Rail is specially designed for large doors weighing between 400 and 800 kg. This system uses stainless steel rails and is available for single or double leaf doors.

All types of industry

DAN-matic kit sets can be used for ALL types of industry, and are designed for the high hygienic standards required in the food industry and related sectors. Consequently, they are especially suitable for chill and freezer applications. All our systems are also compatible with our modern and versatile Speed Commander Door (SCD) automatic system. This allows any single facility to optimise its internal transport operations, with reduced heat/cold loss and lower energy costs as benefits.

DAN-matic Manual

Chill/Freeze 1800 - 2400

Available for door leaves between 0 – 800 kg

Design your own manual DAN-matic kit set with a variety of options.

Choose our type 99 frame in aluminium or stainless steel.

Kit sets are also available with no frame.

- Type 99 in aluminium
- Type 99 in stainless steel
- No frame

Frame reinforcements

Stainless steel reinforcements can be inserted in frames.

Aluminium profiles

Choose between door leaf perimeter profiles for 60 mm, 100 mm or 150 mm door leaves, depending on whether for chill or freeze.

Bottom guide

Choose between wall-mounted bottom guide systems, or bottom guide rail system for fitting on the door leaf.

Freeze only: Our bottom guide system is also available for freezer kit sets, fitted underneath the door leaf.

Wall support bracket

Between 1 and 3 wall support brackets can be used, depending on the size and weight of the door leaf.

Handles

Handles for 60 mm, 100 mm or 150 mm door leaves.

Gaskets

Complete set of gaskets. Gasket type depends on whether door leaf perimeter profile is to be used or not.

Locks

Choose between cylinder lock for 60 mm, 100 mm or 150 mm door leaves, or our padlock arrangement with or without emergency opening device.

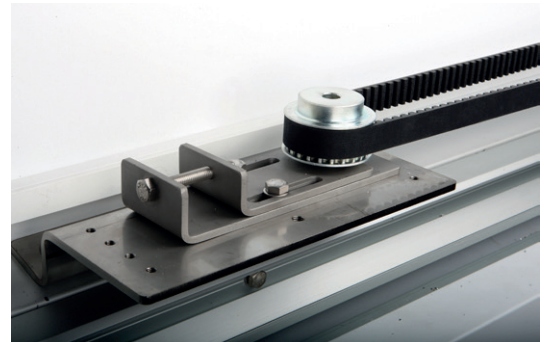
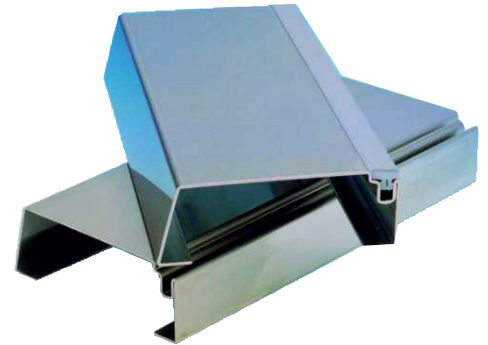
Extras for freezer applications

Thresholds

Thresholds with heating cables or without, but with extra heating cables for the door leaf.

Heating cables

Add heating cables to a DAN-matic set for either door leaf or frame, or both.



DAN-matic Automatic

Chill/Freeze 1800 - 2400

Available for door leaves between 0 – 800 kg

Design your own automatic kit set for smooth automatic door operation.

Choose between two different automatic toothed belt systems

- Automatic system with toothed belt for 1 x 230 V/50 Hz
- Automatic system with toothed belt for 1 x 110 V/60 Hz

Choose between radar, pull cords or push buttons as operating options for a DAN-matic set.

Covers

Choose between two types of covers, or choose both for your DAN-matic set.

- Covers for motor and gear (tooth belt automation), rigidised stainless steel.
- Toothed belt cover, rigidized stainless steel.

Armoured wire

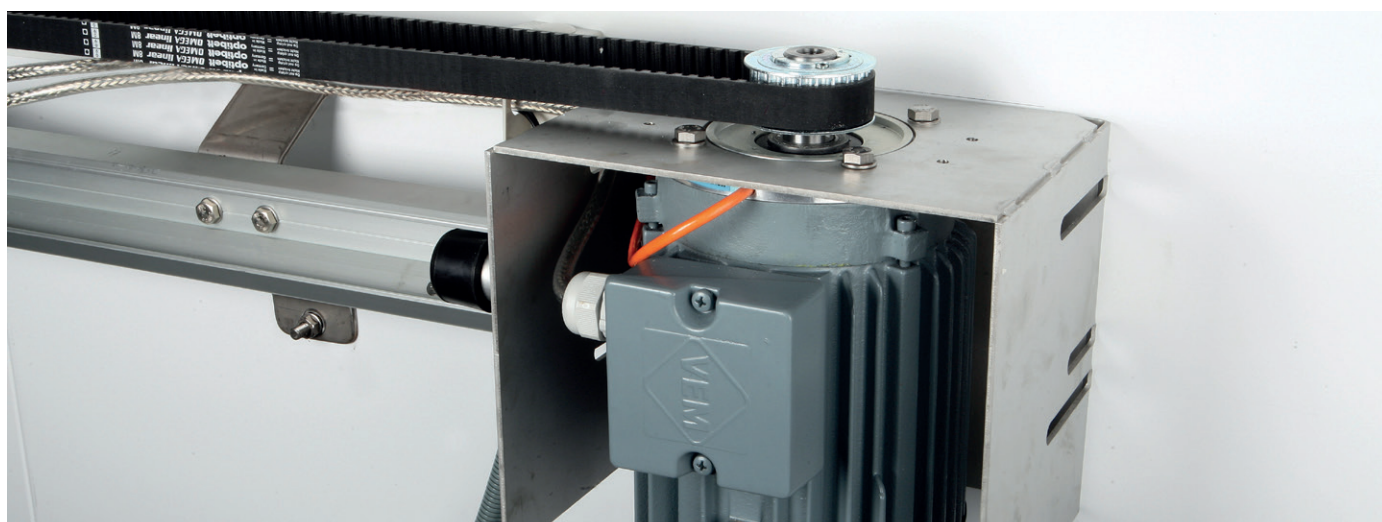
Armoured wire conduit with rectangular junction box for automatic door (2 pcs.).

Wiring

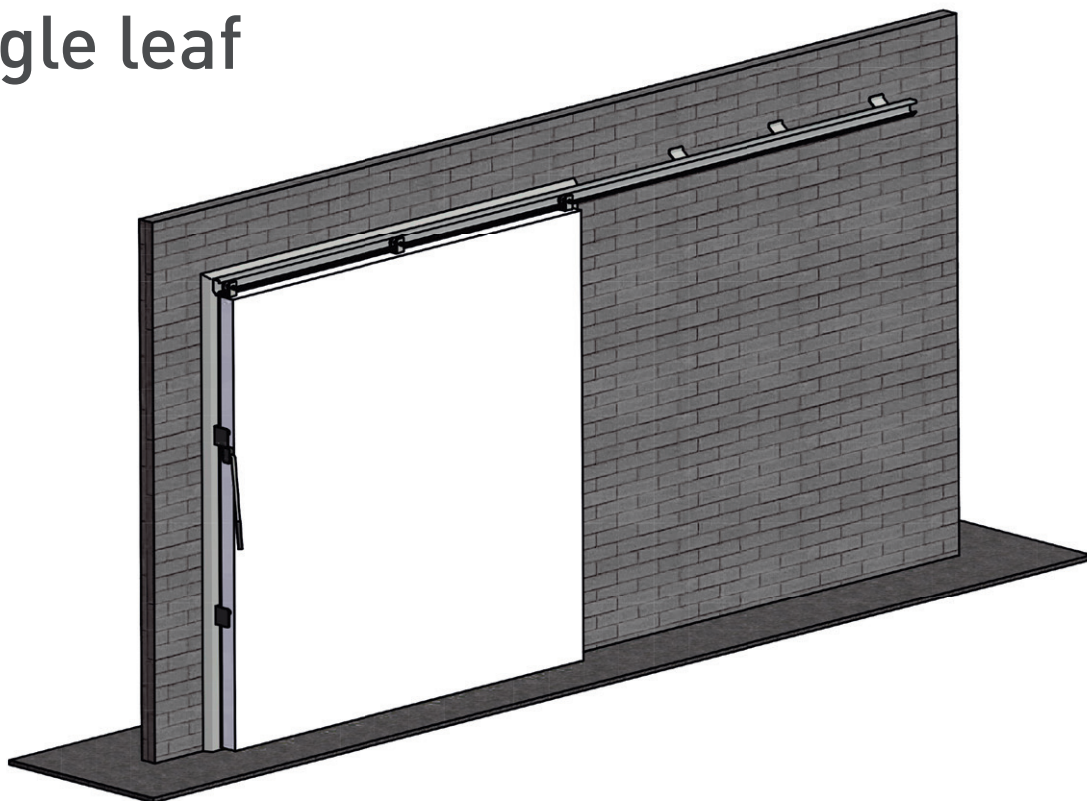
Electrical wiring for control unit supplied with 10 m cables.

Photocells

Photocells in each frame leg placed at 300 mm above floor.

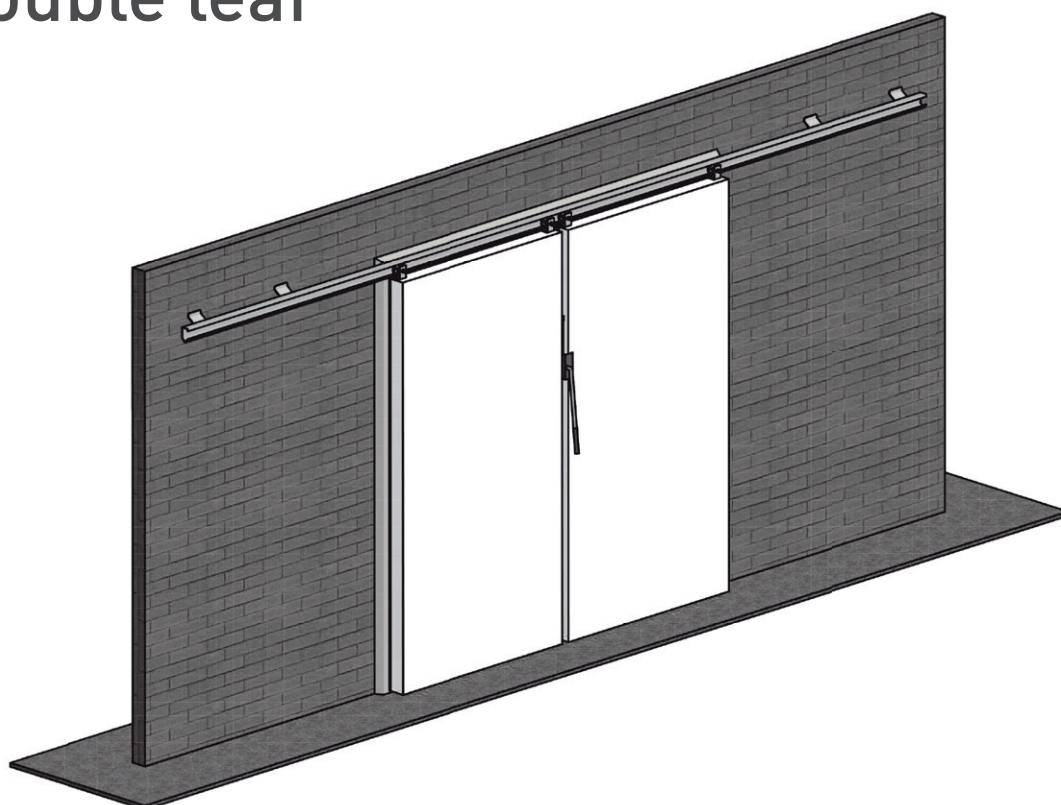


Single leaf



DAN-matic kit sets are **not** supplied with door leaves

Double leaf



DAN-matic kit sets are **not** supplied with door leaves